

Photo:



Standard type of this sensor:

| | |
|-----------|-------------------------------|
| 40T/R-12W | White mesh with aluminum case |
| 40T/R-12B | Black mesh with aluminum case |

Specification:

| PARTS NUMBER | 40T-12 | 40R-12 |
|---|-------------|-------------|
| Center frequency (kHz) | 40.0±1.0kHz | 40.0±1.0kHz |
| Sound pressure level (0dB=0.0002 μ bar) | ≥ 115dB | ----- |
| Sensitivity (0dB vs 1V/ μ bar) | ----- | ≥ -67dB |
| Bandwidth (kHz) | 4.0/105dB | 2.0/-73dB |
| Beam angle -6dB | 60° | |
| Driving voltage (RMS) | 30V | |
| Working temperature(°C) | -30~80 | |

Dimension(40T/R-12B):

A=12.7±0.2

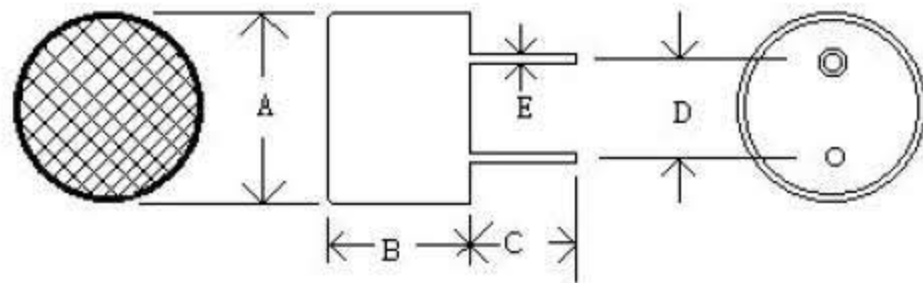
B=9.4±0.4

C=6.2±0.8

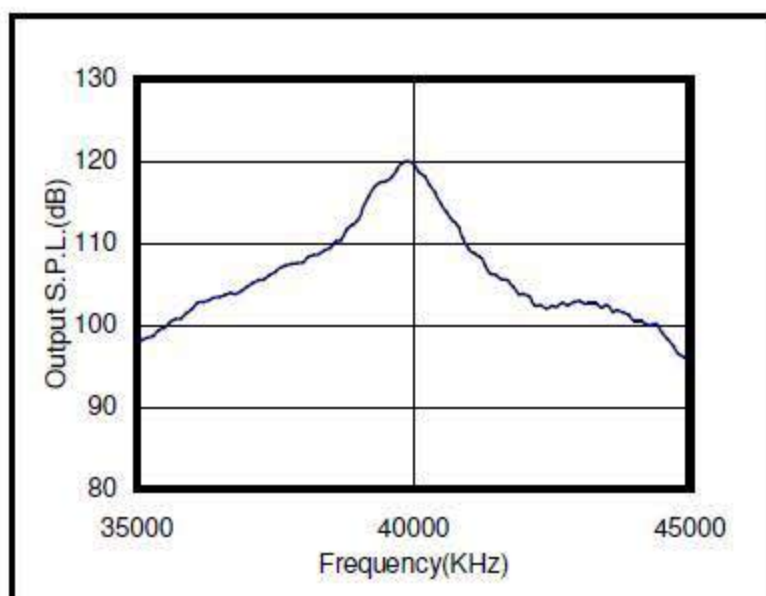
D=8.5±0.2

E=0.7±0.1

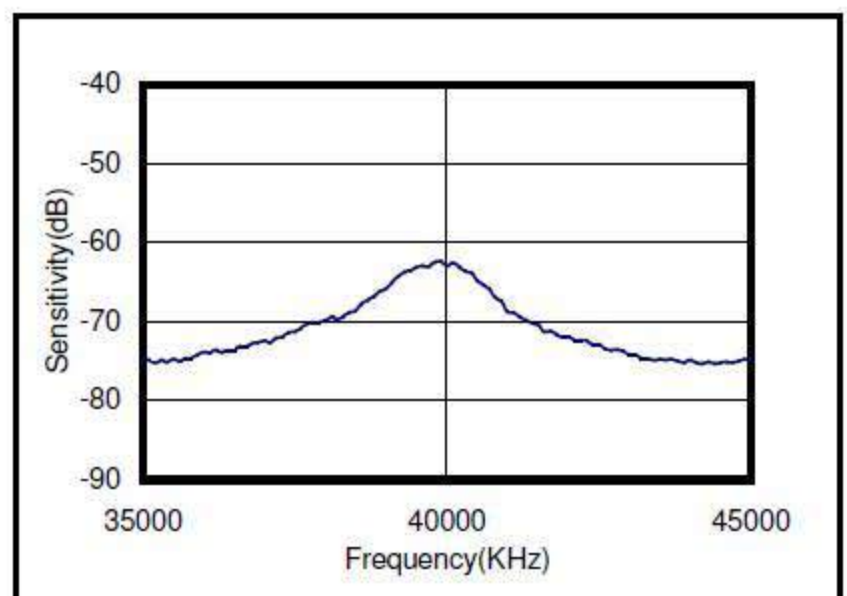
(UNIT: mm)



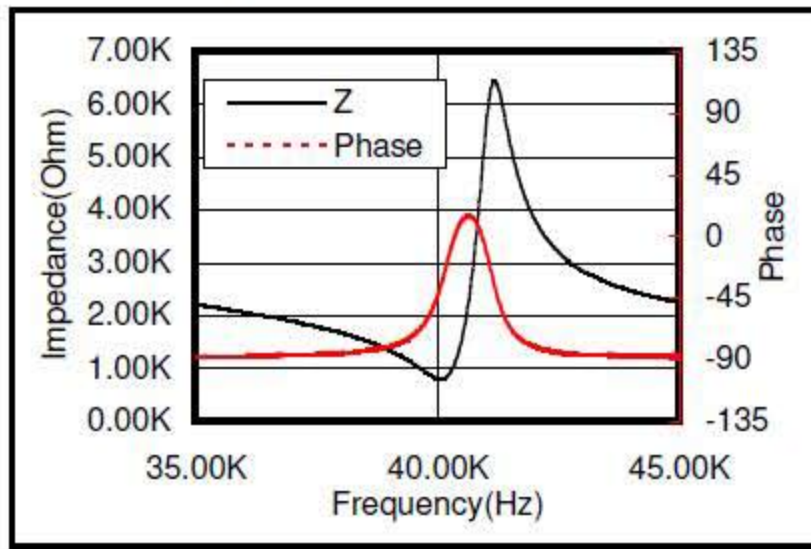
Sound Pressure Level



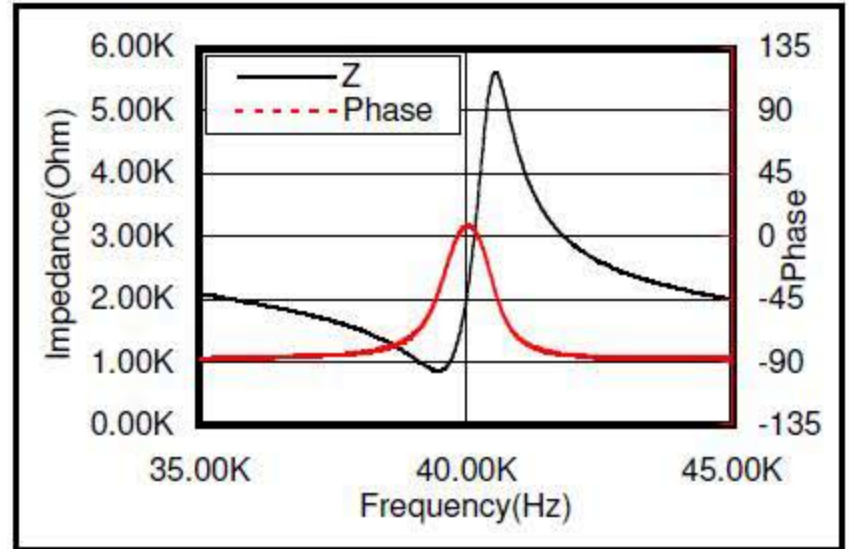
Sensitivity



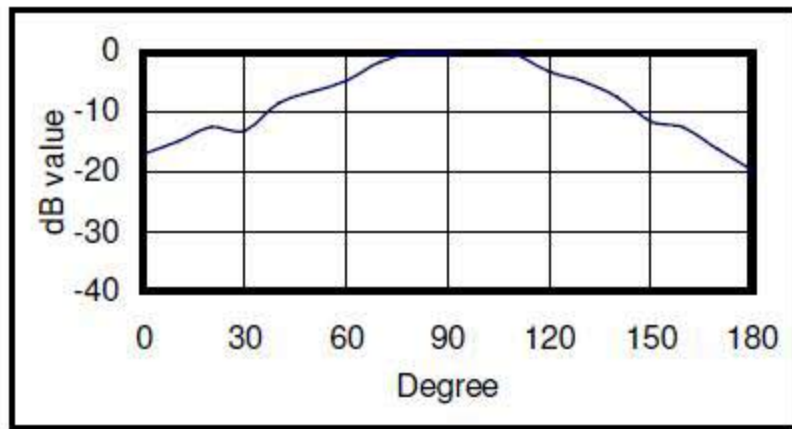
Transmitter impedance



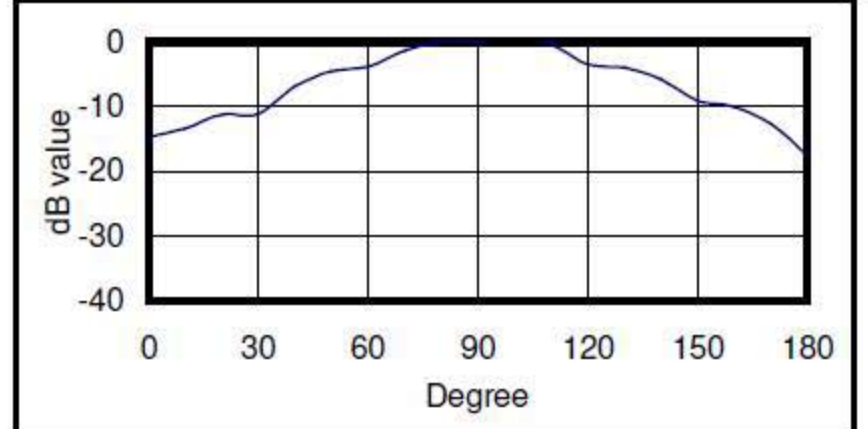
Receiver impedance



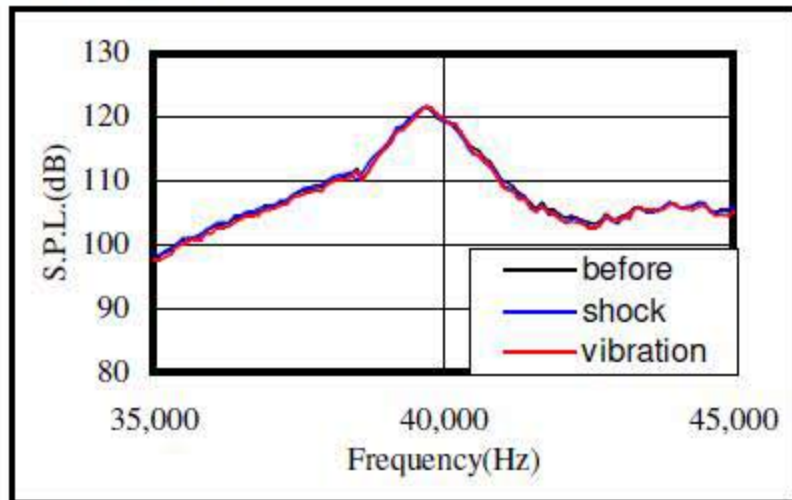
Beam angle of transmitter



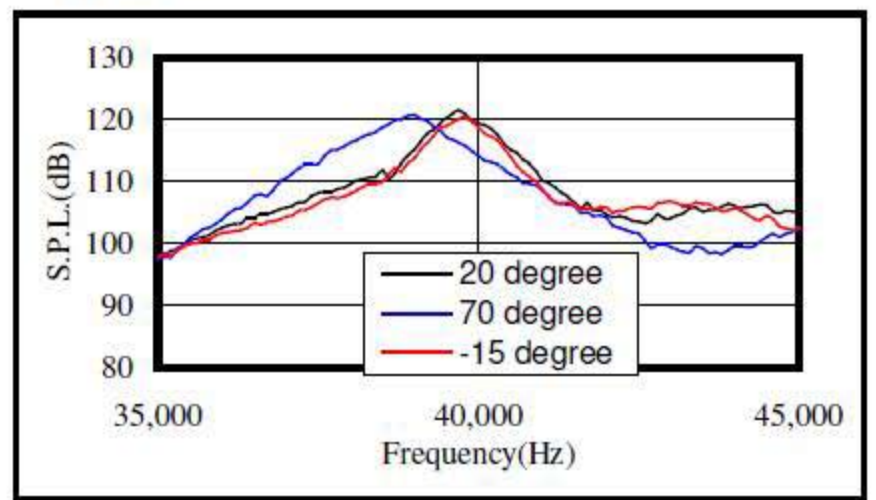
Beam angle of receiver



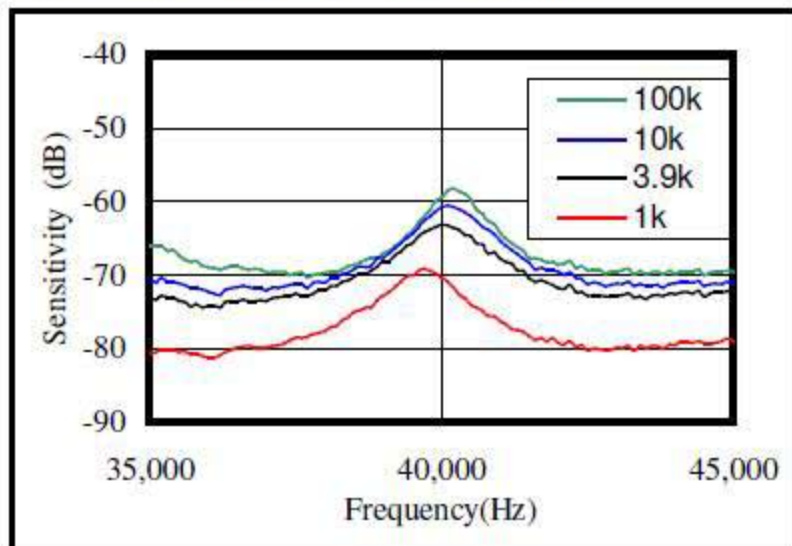
Environment test



Temperature test



Sensitivity change with load resistance



S.P.L. change with driving voltage

